



EW

EVROWOOD

•интерьерный декор•

NEW
COLLECTION

20
18

КОМПАНИЯ EVROWOOD-

занимается производством интерьерного декора из экологически чистых материалов. Наши товары широко используются в заключительном этапе ремонта помещений и придают им вид качественного законченного дизайна.

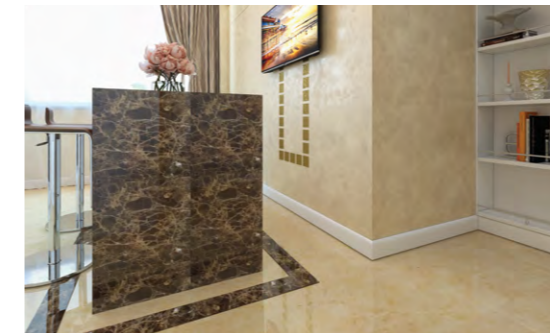
ПРЕИМУЩЕСТВА ПРОДУКЦИИ EVROWOOD:

- производится из экологически чистого сырья;
- новизна и неординарность продукта;
- широкий модельный ряд;
- для производства используются только высококачественный МДФ;
- стильный и лаконичный дизайн, позволяющий удачно вписаться в любой интерьер;
- производится в России на современном высокотехнологичном оборудовании;
- прочность и долговечность;
- влагостойкость;
- легкость резки и монтажа;
- контроль качества на всех этапах производства.

ПРЕИМУЩЕСТВА РАБОТЫ С КОМПАНИЕЙ EVROWOOD-

индивидуальный подход к клиенту. Квалифицированные сотрудники помогут выбрать необходимый товар, который подчеркнет дизайн вашего помещения.

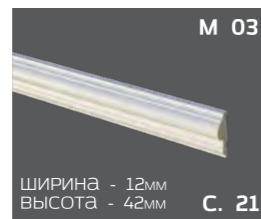
О EVROWOOD



РАЗДЕЛ 1 НАПОЛЬНЫЙ ПЛИНТУС 6-18



РАЗДЕЛ 2 МОЛДИНГИ 19-21



РАЗДЕЛ 4 ПАНЕЛИ 26-29



РАЗДЕЛ 3 ПЛИНТУС С LED ПОДСВЕТКОЙ 22-25



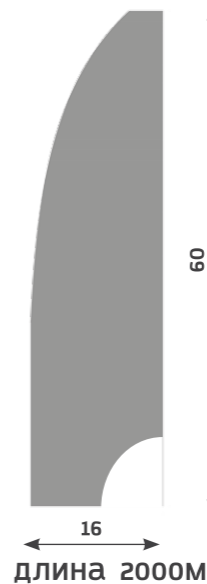
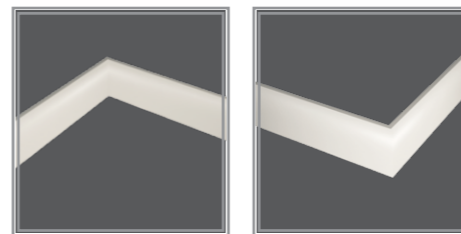
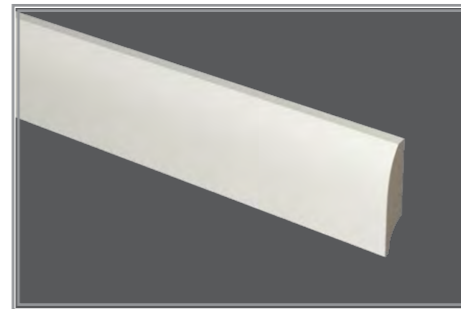
РАЗДЕЛ 5 ОБРАМЛЕНИЕ 30-31 РАЗДЕЛ 6 КАМИНЫ 32-33



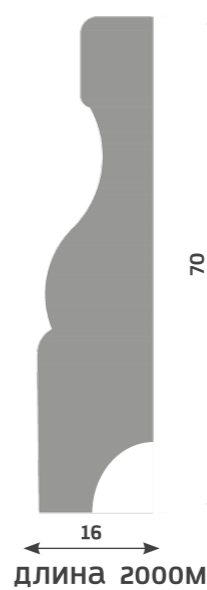
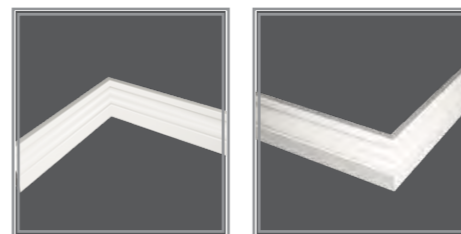
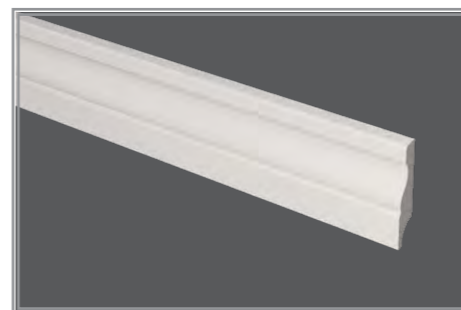
НАПОЛЫННЫЙ ПЛИНТУС

1

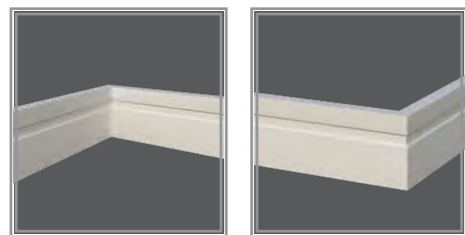
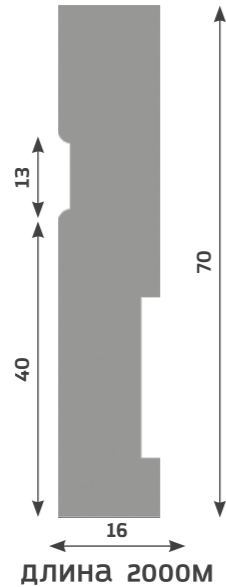
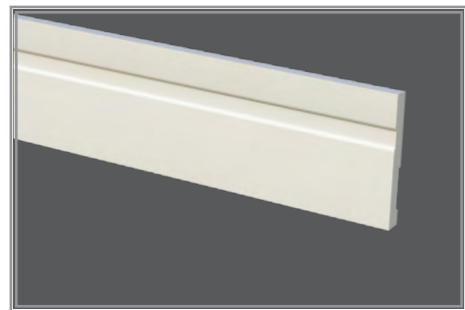
•PN 010



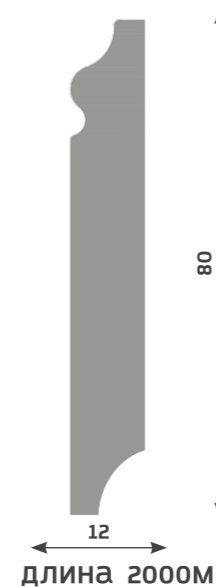
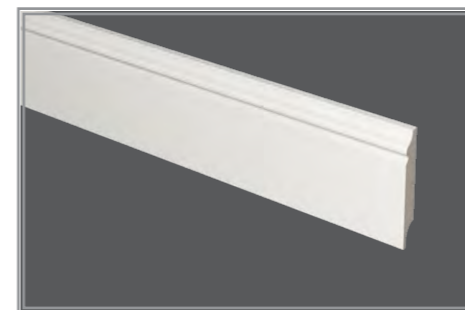
•PN 020



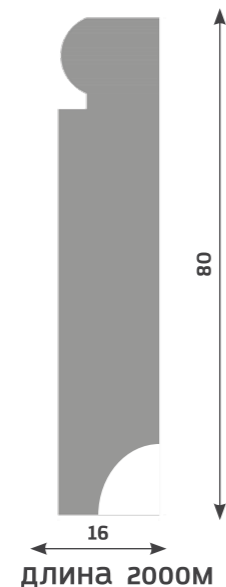
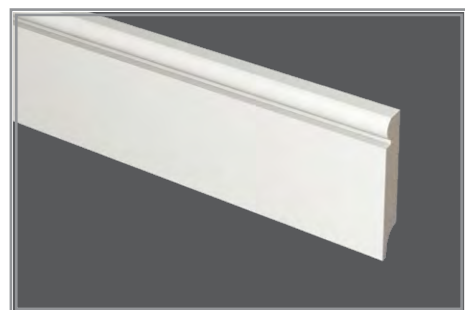
-PN 021* / *имеет аналог LED /



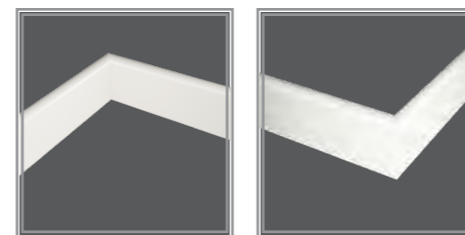
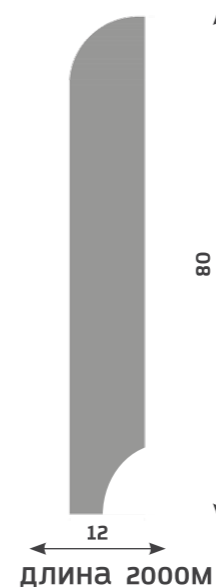
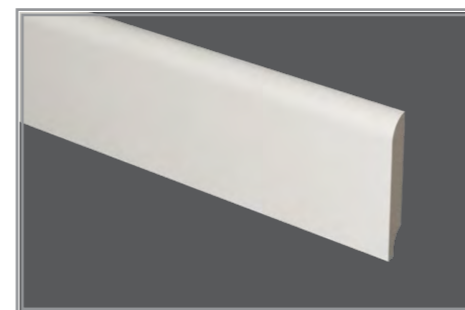
-PN 040



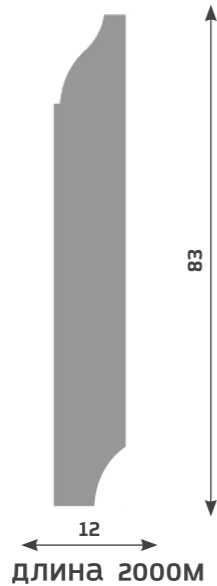
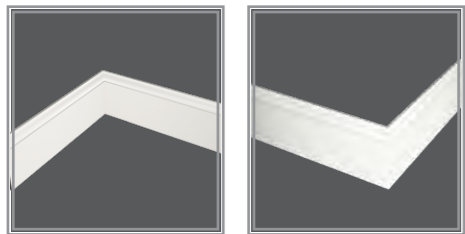
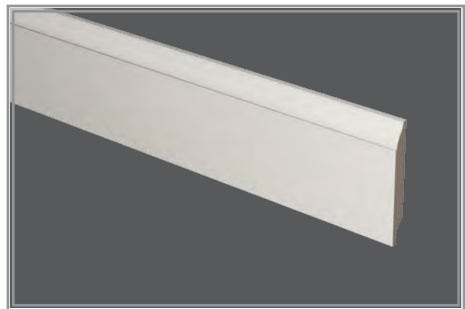
-PN 030* / *имеет аналог LED /



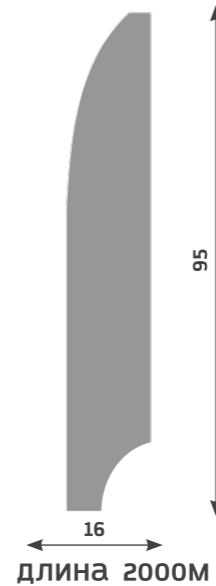
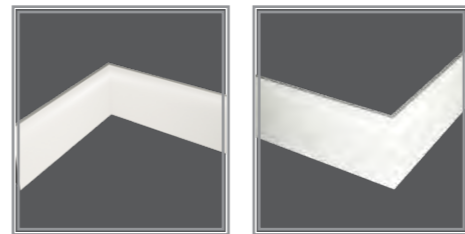
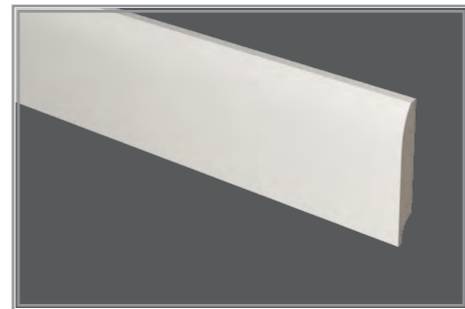
-PN 050* / *имеет аналог LED /



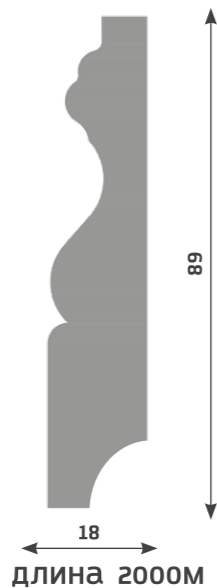
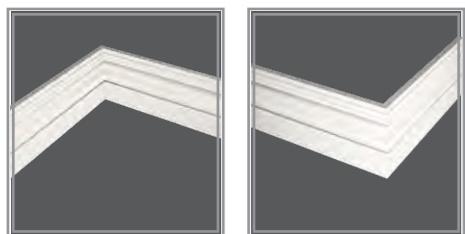
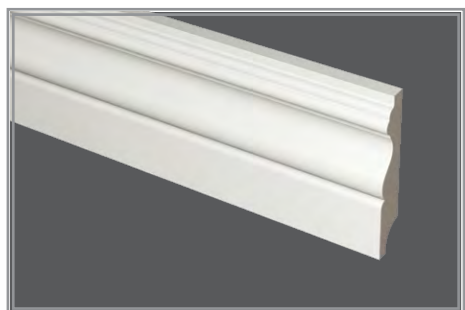
•PN 060



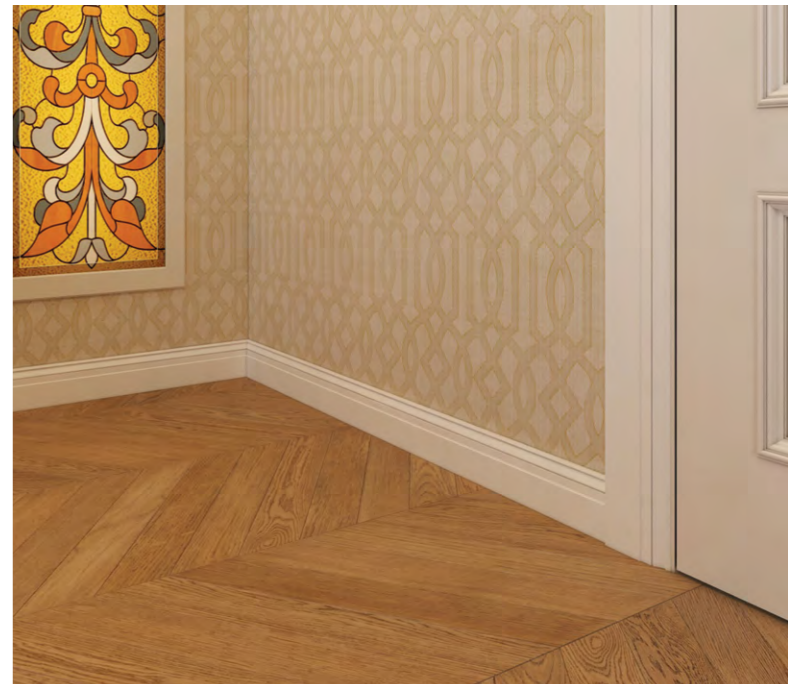
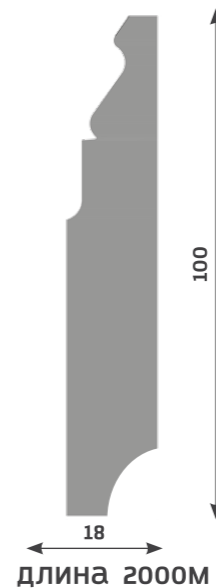
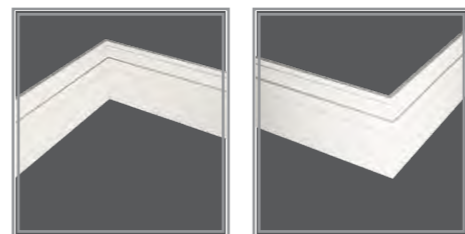
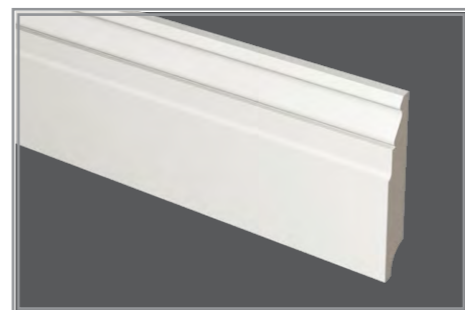
•PN 080* / *имеет аналог LED /



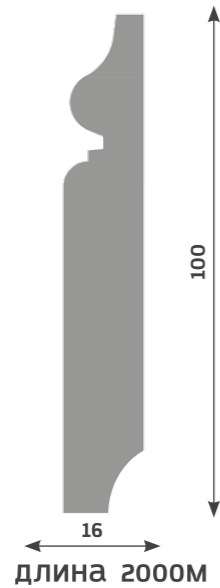
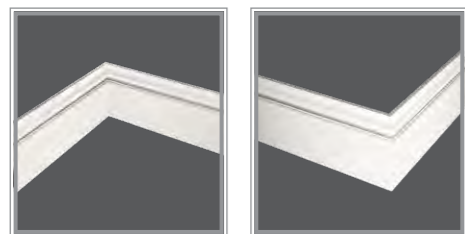
•PN 070



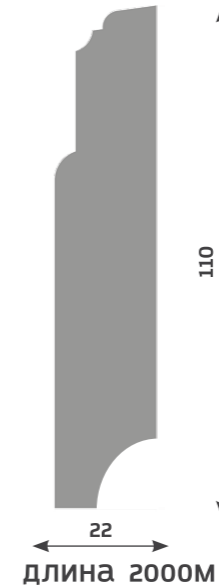
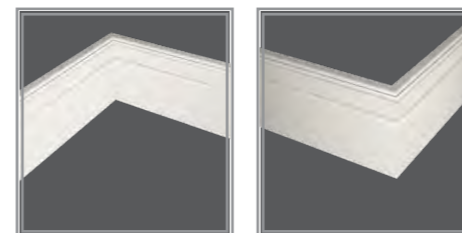
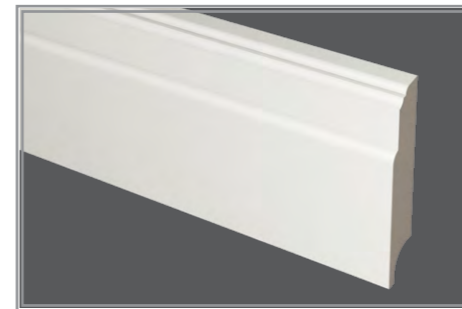
•PN 090



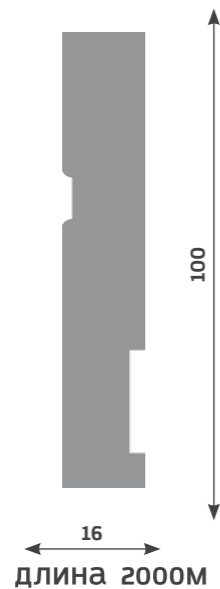
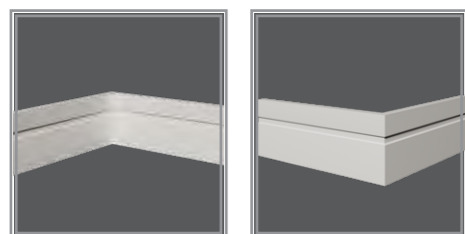
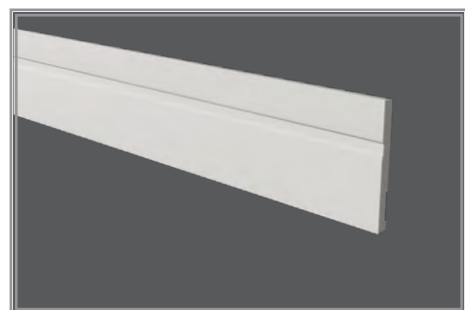
•PN 100



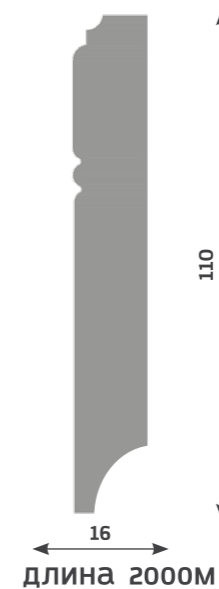
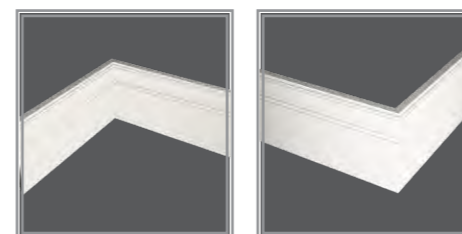
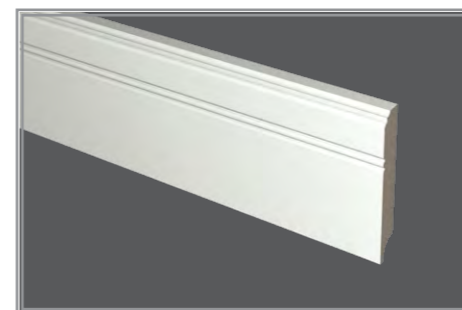
•PN 110



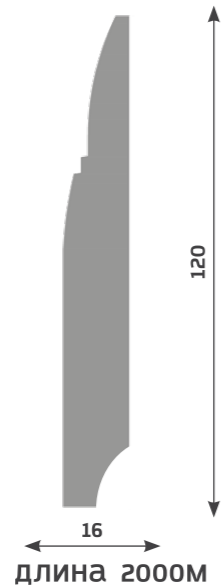
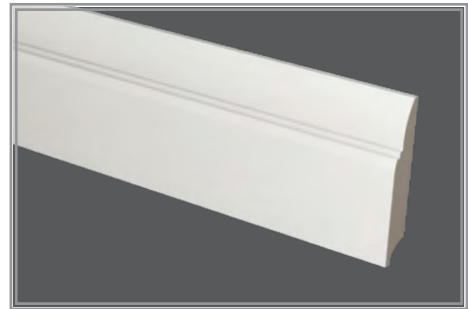
•PN 101* / *имеет аналог LED /



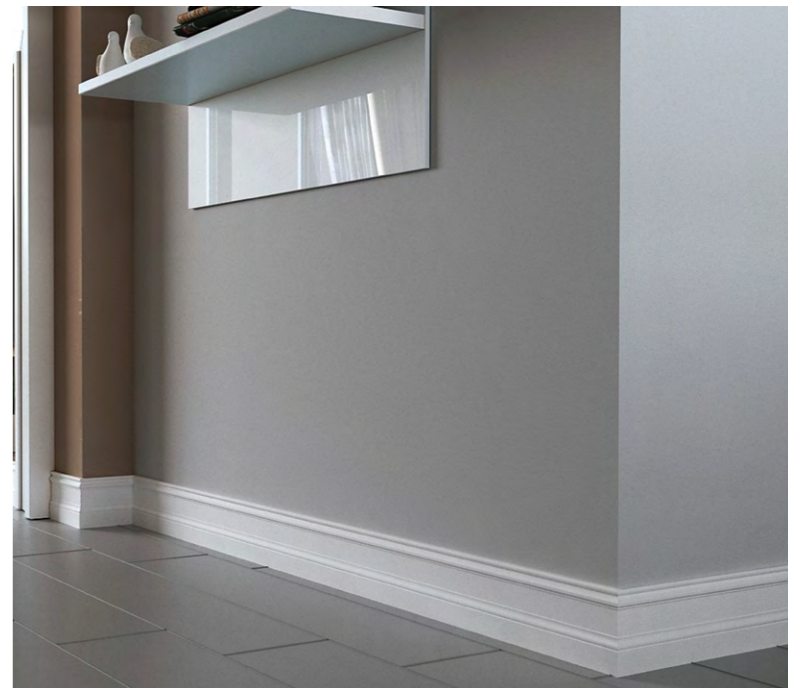
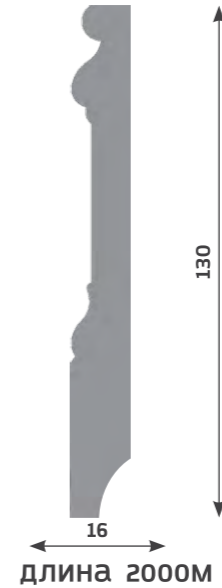
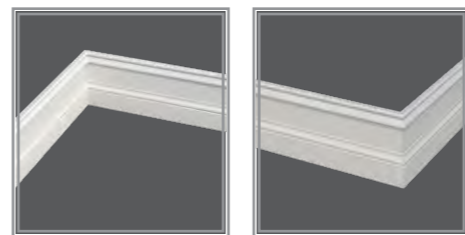
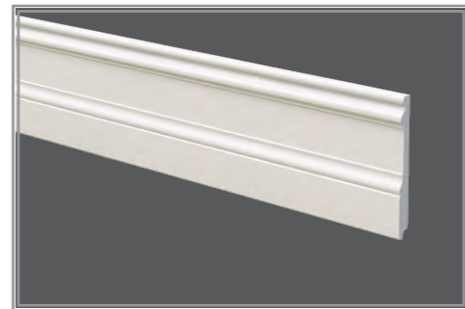
•PN 120* / *имеет аналог LED /



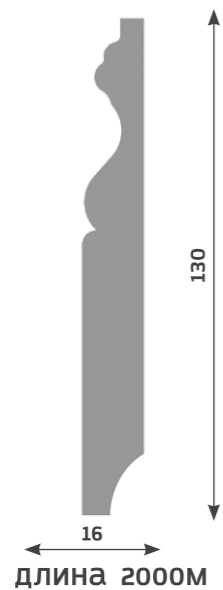
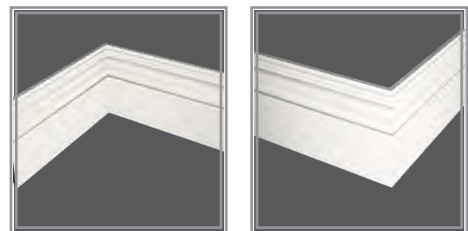
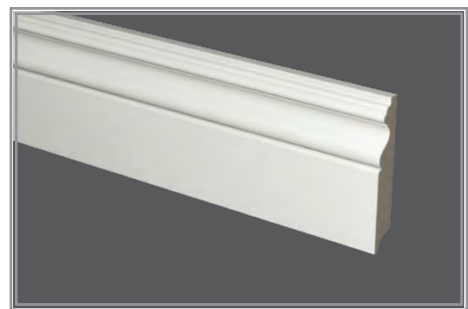
•PN 130



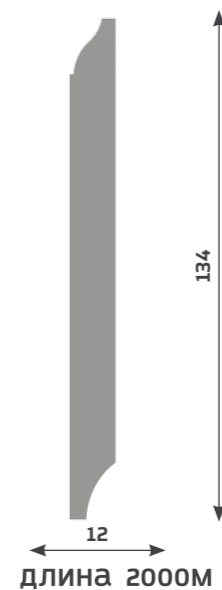
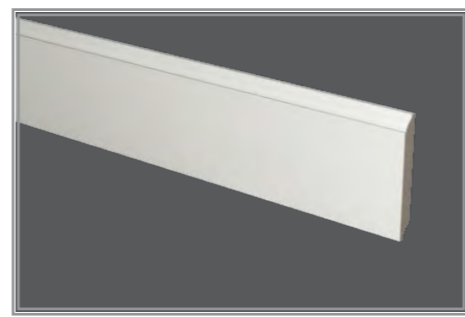
•PN 141



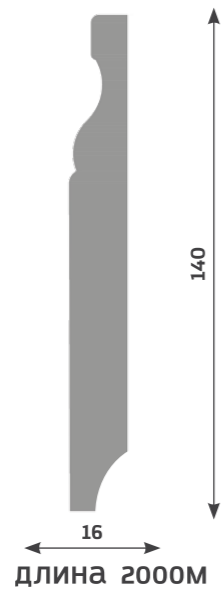
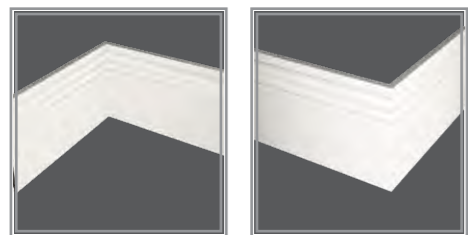
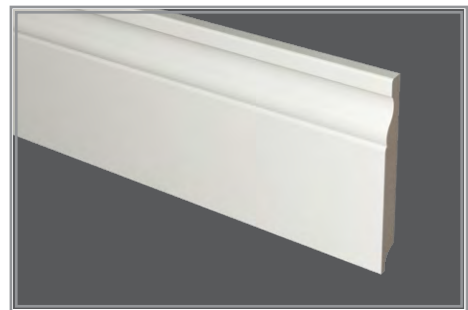
•PN 140



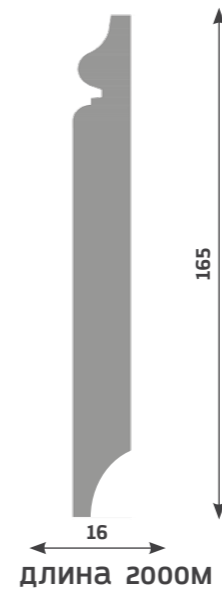
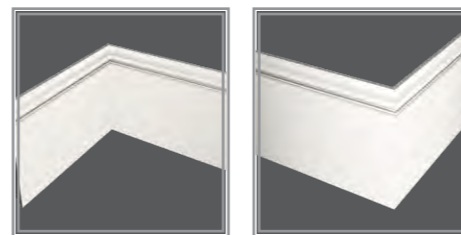
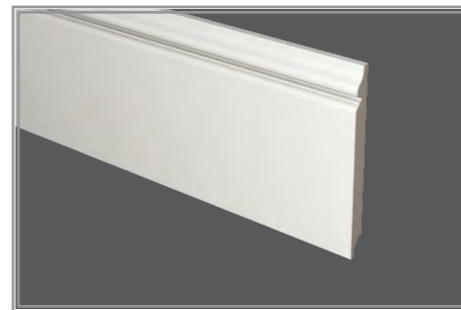
•PN 150



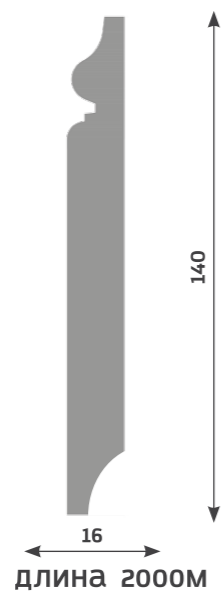
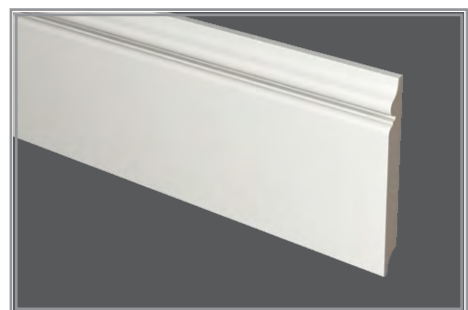
•PN 160



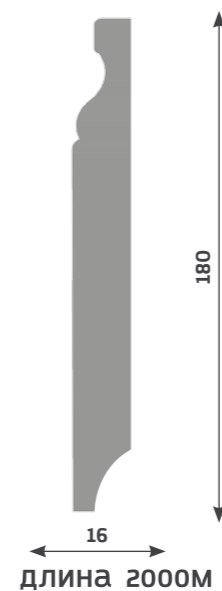
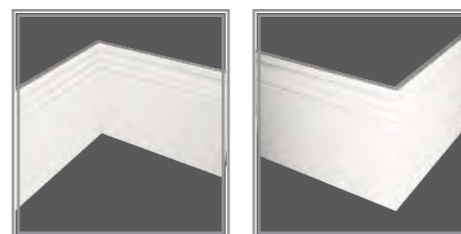
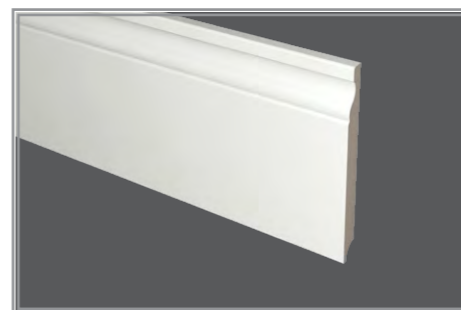
•PN 180



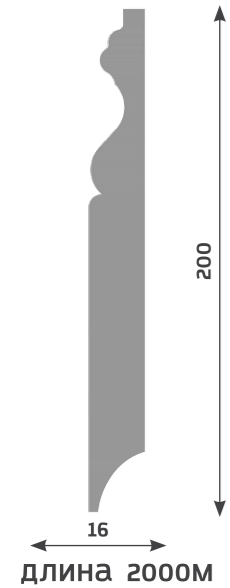
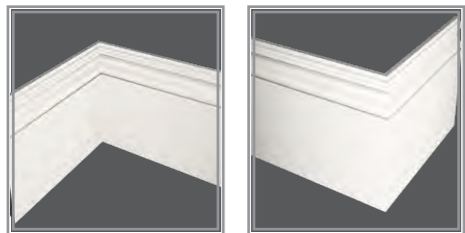
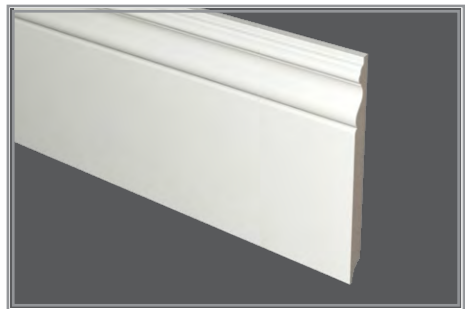
•PN 170



•PN 190



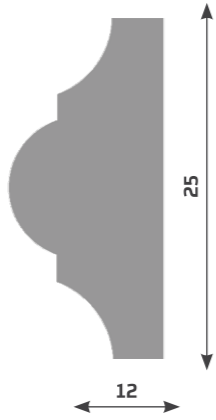
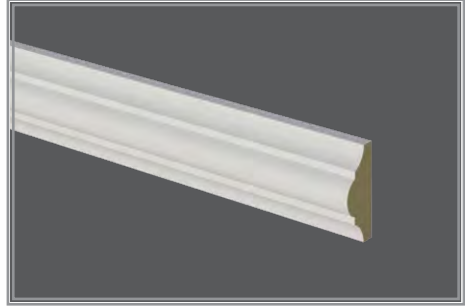
·PN 200



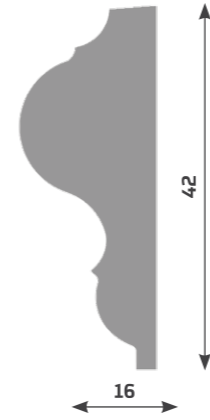
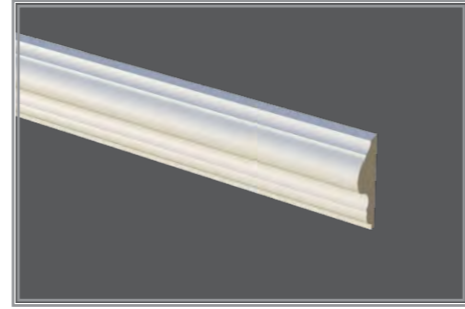
МОЛДИНГИ

NEW
COLLECTION

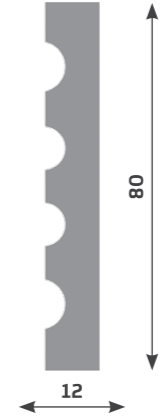
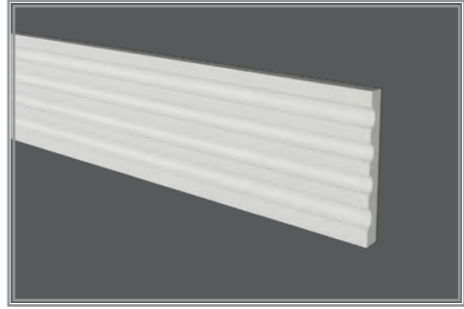
·M 01



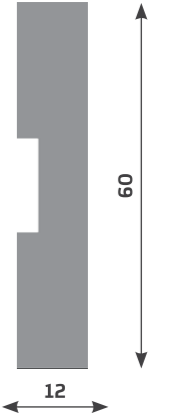
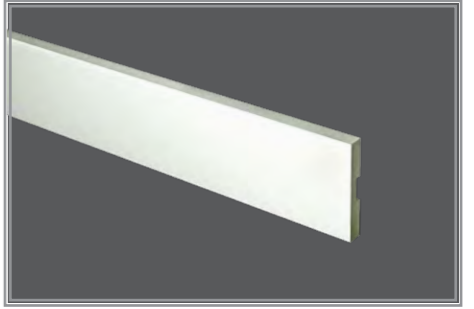
·M 03



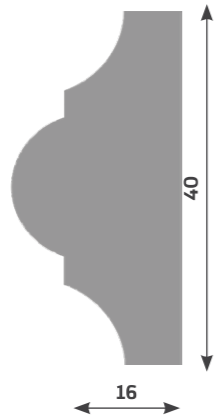
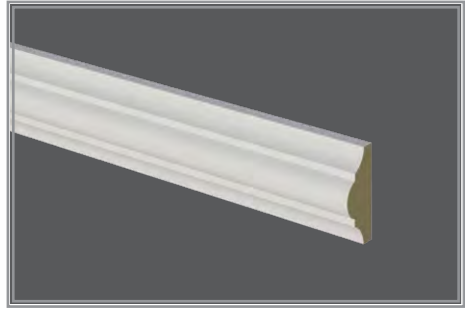
·M 04



·M 05



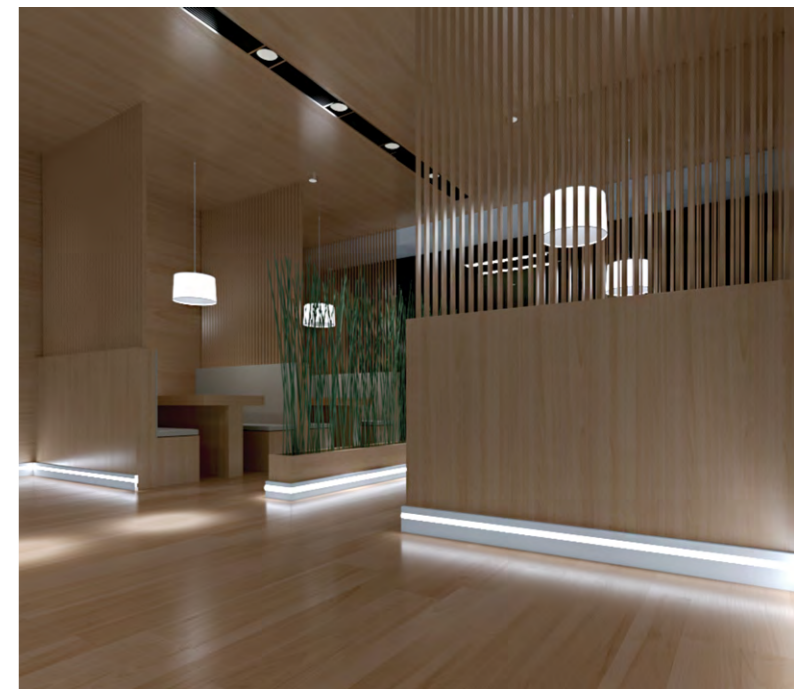
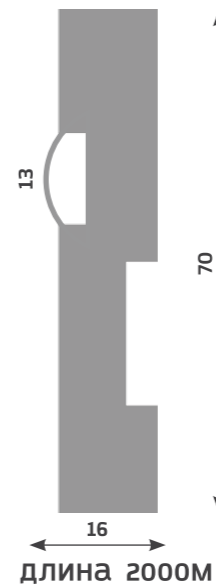
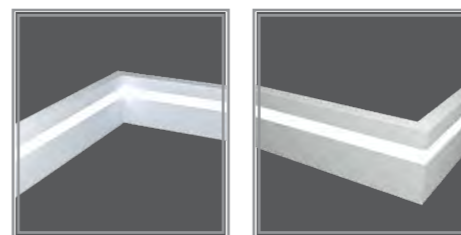
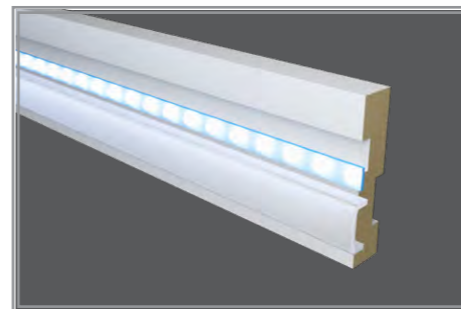
·M 02



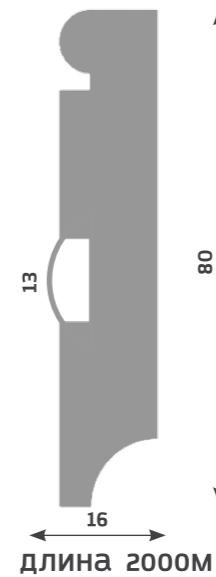
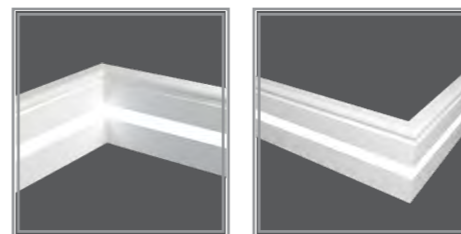
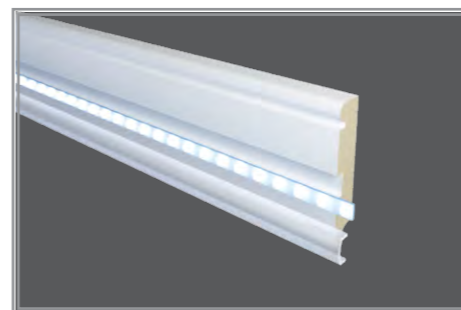
ПЛИНТУС С LED ПОДСВЕТКОЙ

NEW
COLLECTION

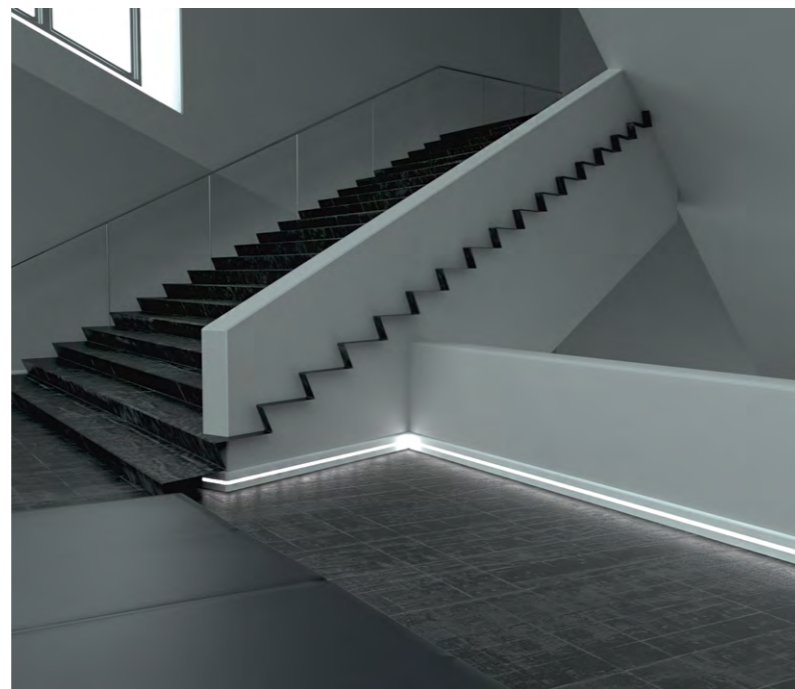
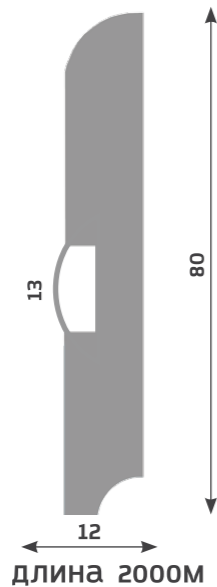
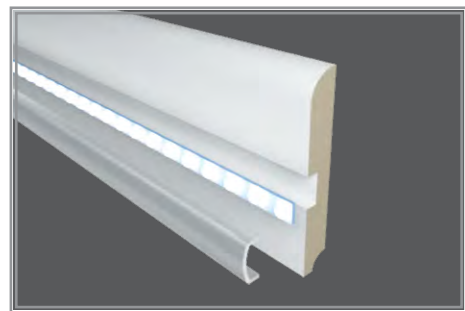
·PN 021 LED



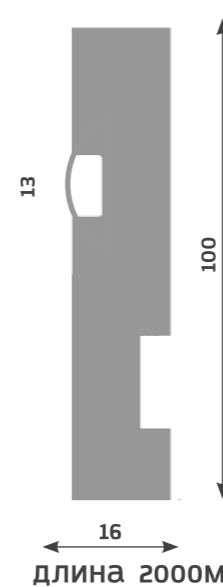
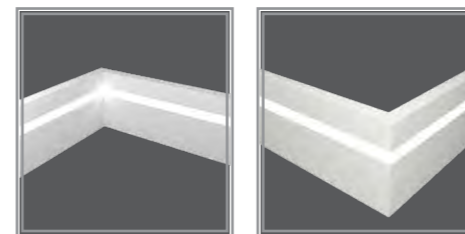
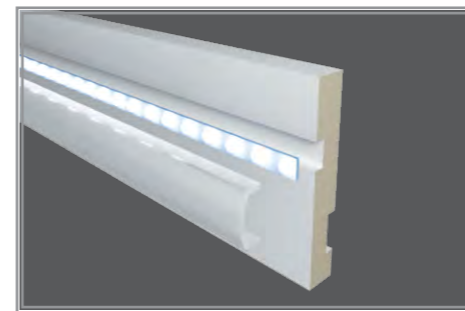
·PN 030 LED



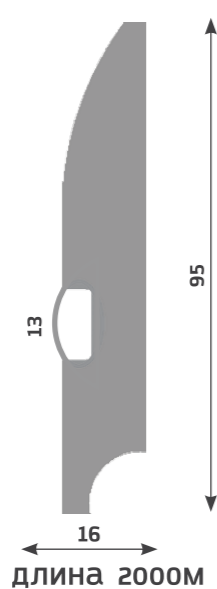
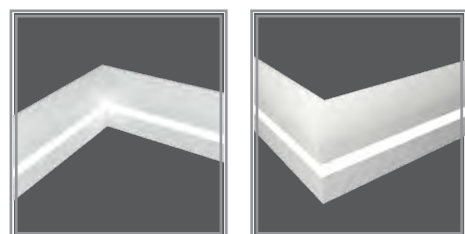
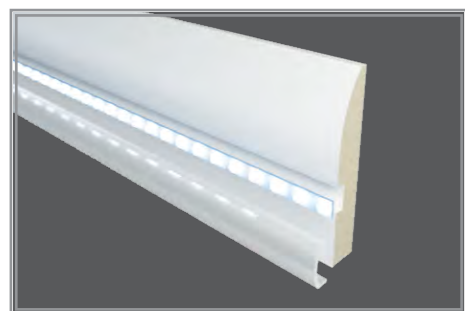
·PN 050 LED



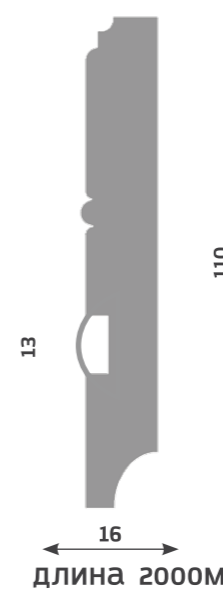
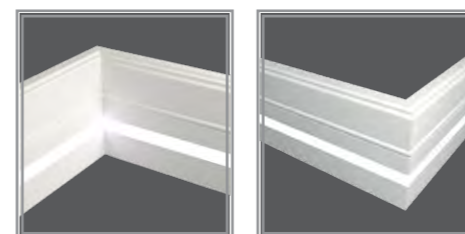
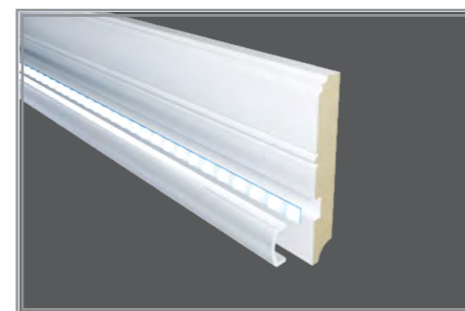
·PN 101 LED



·PN 080 LED



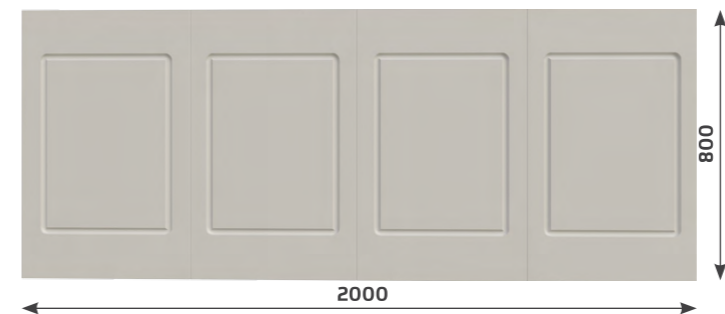
·PN 120 LED



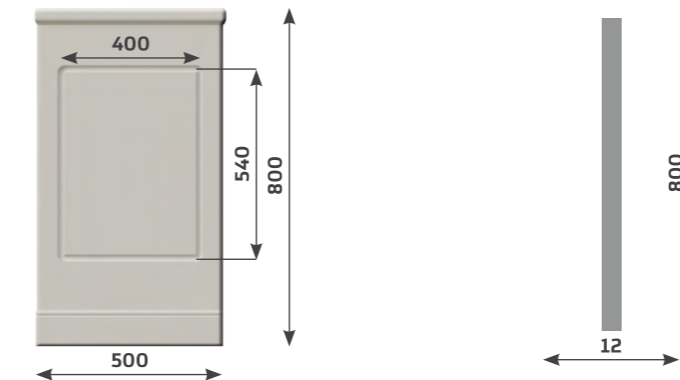
ПАНЕЛИ

NEW
COLLECTION

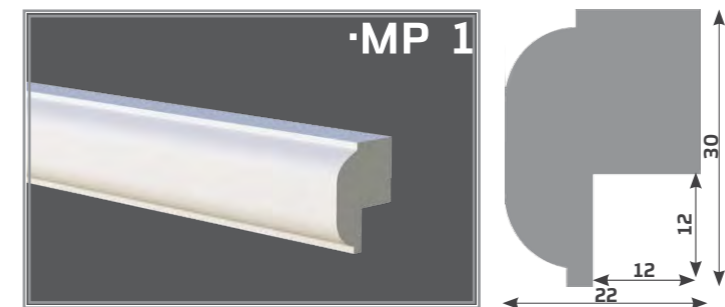
·PL 1



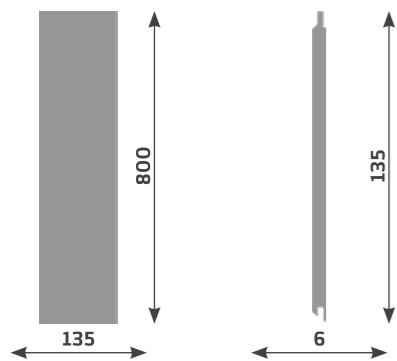
·PL 1-500



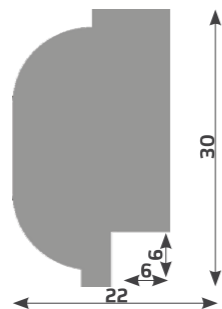
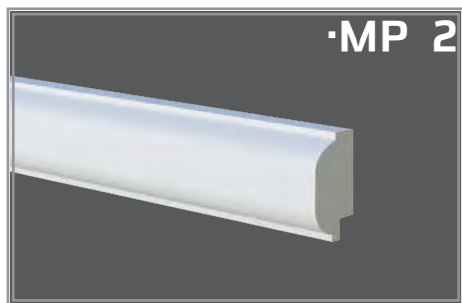
·ЗАВЕРШАЮЩИЙ МОЛДИНГ К ПАНЕЛИ



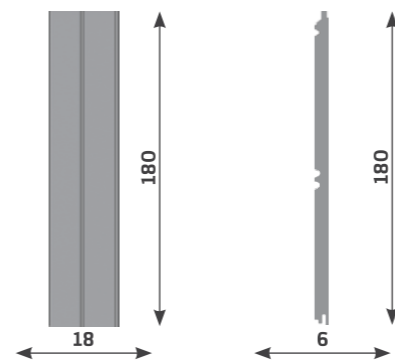
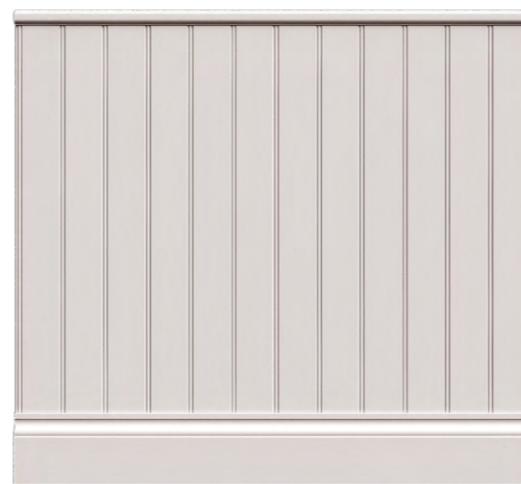
·PL 2



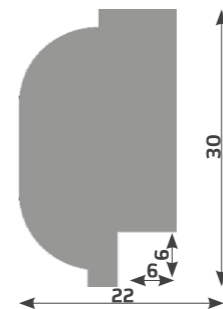
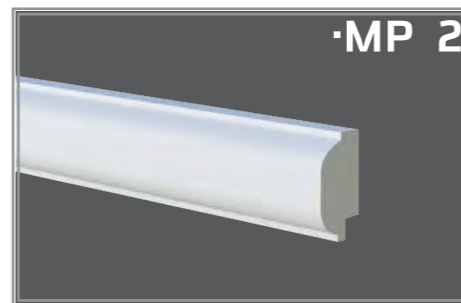
·ЗАВЕРШАЮЩИЙ МОЛДИНГ К ПАНЕЛИ



·PL 3



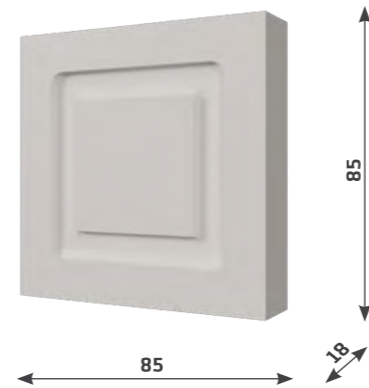
·ЗАВЕРШАЮЩИЙ МОЛДИНГ К ПАНЕЛИ



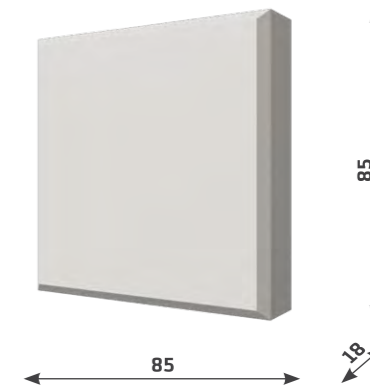
ОБРАМЛЕНИЕ

NEW
COLLECTION

·K01



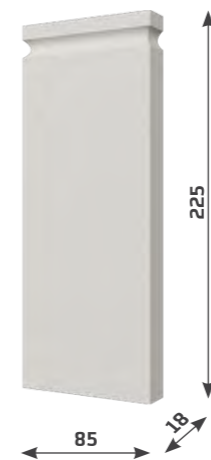
·K02



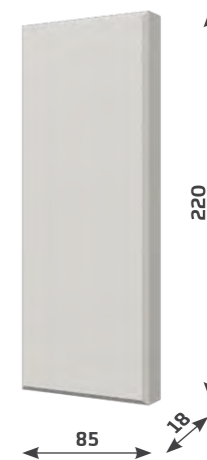
·M04



·Б01



·Б02

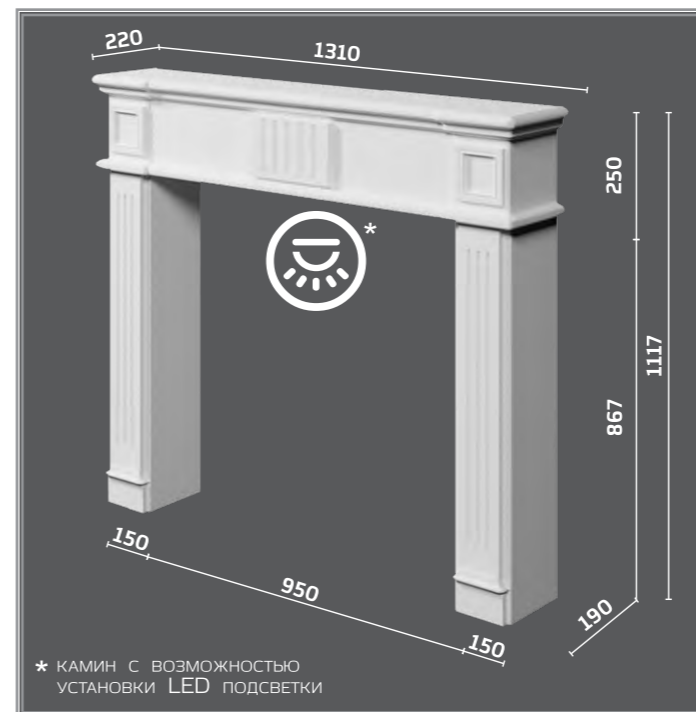


КАМИНЫ

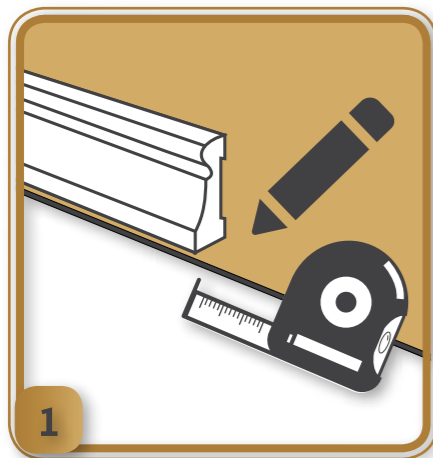
NEW
COLLECTION



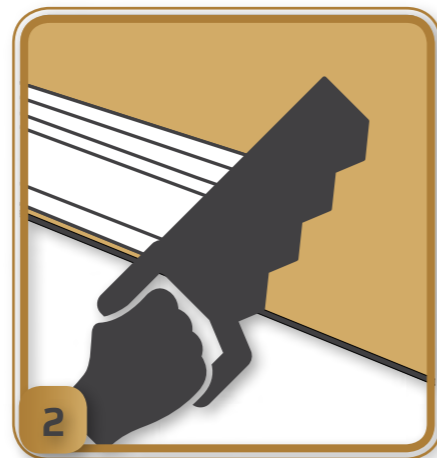
·KM 01 LED



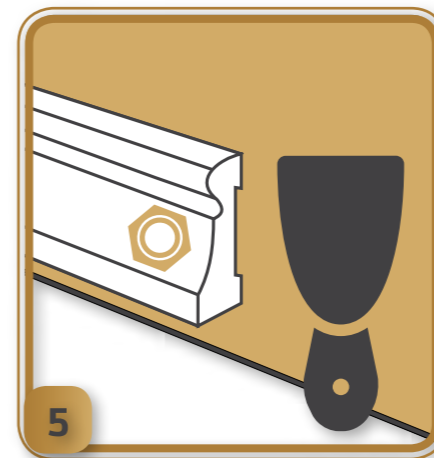
РЕКОМЕНДАЦИИ ПО МОНТАЖУ ПЛИНТУСА



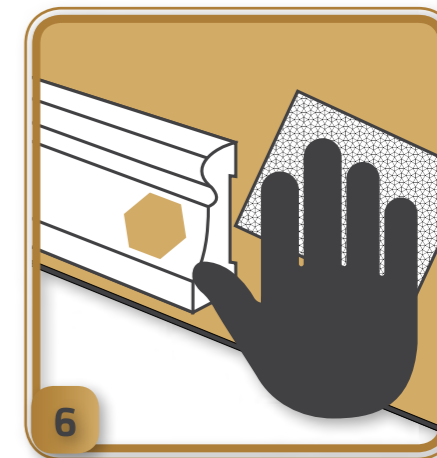
ЗАМЕРИТЬ МЕСТО МОНТАЖА И ОТМЕТИТЬ НА ПЛИНТУСЕ.



Для запила плинтуса необходимо использовать стусло с ножовкой (мелким зубом) или торцевую пилу.



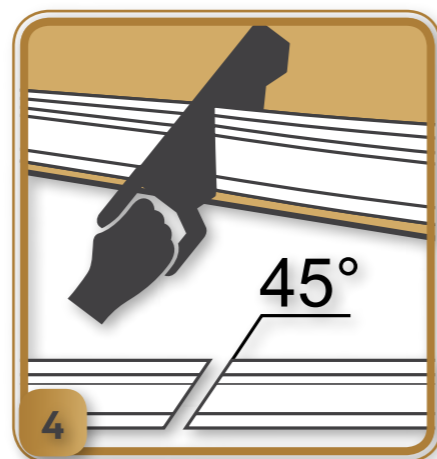
При использовании пневмо пистолета и саморезов, места заглубления гвоздей и саморезов обработать шпатлевкой.



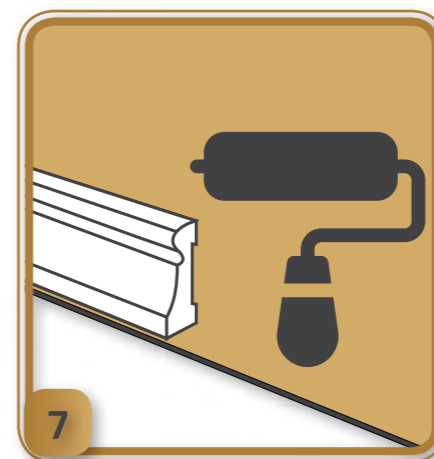
После высыхания шпатлевки обработать мелкозернистой наждачной бумагой.



Монтаж плинтуса может осуществляться тремя способами с помощью жидких гвоздей, пневмо пистолета, саморезов.



Каждое соединение на прямой поверхности рекомендуется запилить под 45 градусов для наилучшего прилегания.



Окрашивание производить валиком или пульверизатором.



Краски рекомендуются к нанесению акриловые, полиуретановые и на водной основе.

The background of the image is a dark, textured wall featuring intricate decorative elements. On either side of a central doorway, there are large, vertically oriented panels with ornate carvings, including floral and scrollwork motifs. Above these panels are two identical brass sconces, each with two curved arms holding light bulbs. The overall aesthetic is classic and elegant.

EW

EVROWOOD

•интерьерный декор•

[WWW.EVROWOOD.RU](http://www.evrowood.ru)